

Pitufino—User and Installation Manual

Document version 1.16
Last modified for firmware version V1.5.18

Contents

Preface.....	2
1 Installation.....	3
1.1 Mounting your Pitufino.....	3
1.2 Hardware Model V1.2.....	3
1.3 Hardware Models V1.1 and V1.0.....	5
2 Configuration.....	7
2.1 Essential Settings.....	7
2.2 Recommended Settings.....	7
2.3 Filter Settings and Routing.....	7
2.4 Server Settings and Client-Software Configuration.....	9
2.5 Wi-Fi Settings—Connection to an Existing Wi-Fi Network.....	10
2.6 NMEA0183 Sentence Translator.....	10
2.7 Magnetic Variation, True Wind, Data Damping, Active Waypoint Data.....	11
2.8 Alarms.....	12
2.9 Expansion Modules.....	12
3 Expert Features.....	14
3.1 Status/Monitoring/Debugging Stream.....	14
3.2 Status Page.....	14
3.3 Device Monitoring.....	15
3.4 Factory Reset.....	15
3.5 Using fixed IP addresses with Pitufino’s own Wi-Fi.....	16
4 Pitufino’s Browser-Run Instruments.....	17
4.1 Browser Compatibility.....	17
4.2 App Launchers on your Mobile’s Home Screen.....	17
4.3 Which data-routing/filtering rules apply for these browser-run instruments?.....	18
4.4 Autopilot Control.....	18
4.5 Alarm Settings.....	19
4.6 Custom-Data Editor.....	19
4.7 Polar Data Import.....	20
4.8 Web App Preferences.....	21
4.9 Known Issues.....	21
4.10 Sailing Instruments App.....	22
4.11 Anchor-Watch App.....	26
4.12 Multi Display App.....	27
5 Firmware Updates.....	30
5.1 Important Notes.....	30
5.2 Updating from version V1.5.17 or newer.....	30
5.3 Updating from versions older than V1.5.17.....	30
6 Technical Support.....	31
7 Appendix 1: Pitufino’s NMEA0183 data servers.....	32
7.1 TCP Server (default port 2947).....	32
7.2 UDP Broadcast Server (default port 10110).....	32

7.3 UDP Unicast Server (default port 10111).....	32
8 Appendix 2: Virtual Serial Ports from Network Connections.....	33
9 Appendix 3: \$PPITA Sentence for Autopilot Status.....	34
10 Document History.....	35

Preface

Thank you for purchasing a Pitufino navdata gateway. We are sure it will be a great addition to your existing navigation electronics. Pitufino has been developed on board the cruising sailboat *Pitufa* where—inspired by many practical situations—we incorporated useful features we felt were missing in other products available on the market. Pitufino’s capabilities are continually being extended (see 5 Firmware Updates), including ideas of Pitufino owners and fellow sailors.

Christian Feldbauer

S/Y Pitufa

www.pitufa.at

1 Installation

1.1 Mounting your Pitufino

For mounting your Pitufino, choose a safe environment that is

- close to your existing navigation devices you wish to connect to Pitufino and/or close to your NMEA2000 backbone T connectors,
- at least 90cm (3ft) away from a compass,
- at least 20cm (8”) away from solid metal objects such as a metal hull or metal bulkhead,
- dry and not exposed to any splashing water or rain,
- not beneath or near any container or plumbing filled with water or other liquids,
- far away from any flammable or hazardous atmosphere such as in an engine/generator room or close to fuel tanks or gas bottles.

Mount Pitufino vertically, with its connectors facing downwards, to a flat surface on a wall or bulkhead using 2 small screws.

1.2 Hardware Model V1.2

Connecting to an NMEA2000/FurunoCAN/SimNet/SeaTalkNG network

On the top side, Pitufino has a standard NMEA2000 socket for Micro-C cables to connect to a T connector of an NMEA2000 or FurunoCAN backbone. For SimNet and SeaTalkNG networks, you need an adapter cable (e.g., SeaTalkNG to Micro-C female).

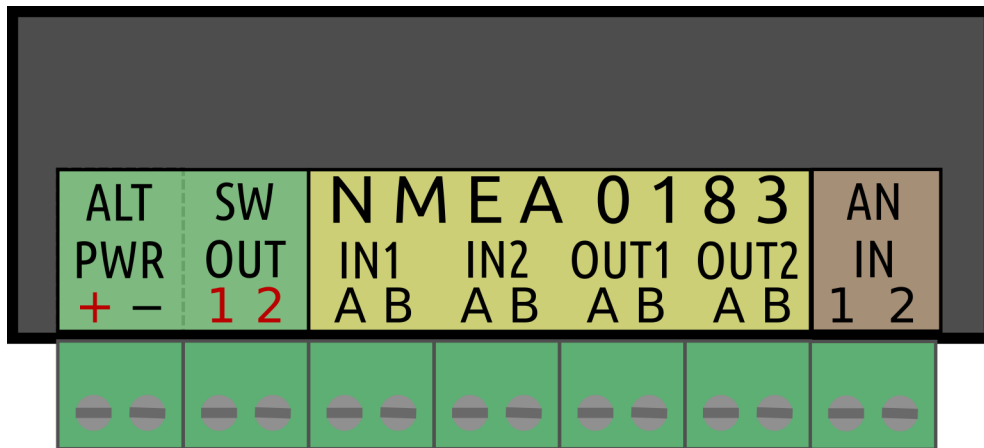
Pitufino uses the backbone’s power supply and adds a load of 3 LEN to the network. If your network cannot handle this additional load, it is possible to supply Pitufino from another power source (12 VDC or 24 VDC) as long as it has the **same ground** as the backbone (see below “Alternative Power”).

Connect Victron VE.Direct devices

Pitufino has two VE.Direct ports on its top side for connecting Victron battery monitors, smart shunts and MPPT solar chargers. We recommend to use original VE.Direct cables. If you make the cable yourself using 4-pin, 2mm-pitch, female PH connectors (JST), it is necessary to **cross out** pins 2 and 3! Also make sure your Victron devices have a recent firmware installed.

Connectors on the bottom side

Pitufino has 7 connectors that can be unplugged from their sockets to facilitate the installation. Each connector has 2 screw terminals for bare wire ends.

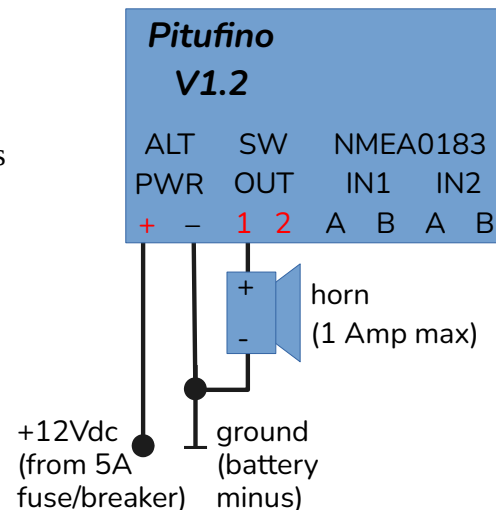


Alternative Power “ALT PWR”

If you do not have an NMEA2000 network or your network powers already too many other devices or you want to use the switched outputs, connect the ALT PWR – (battery minus) and ALT PWR + (battery plus) screw terminals to your 12 VDC or 24 VDC power source. It is recommended to use a breaker or fuse (5 A) in the positive supply wire. If Pitufino is connected to an NMEA2000 network, the alternative supply must be on the same ground as the network’s backbone.

Switched Outputs “SW OUT”

Those two outputs allow to connect external alarm buzzers (current firmware) or to switch other devices or lights on and off per Pitufino web apps (upcoming firmware versions). Solid-state relays are used to switch the ALT PWR + to these outputs and each can handle a continuous current of 1A. For devices that require higher currents, an extra relay is required (fitted with recovery diode).



Connecting NMEA0183 devices

Pitufino can be connected to two NMEA0183 talkers and to two (or more) NMEA0183 listeners. Connect a talker to an NMEA0183 input (#1 or #2). Only one talker is allowed per input. Connect A (or H or +) to A and B (or L or -) to B.

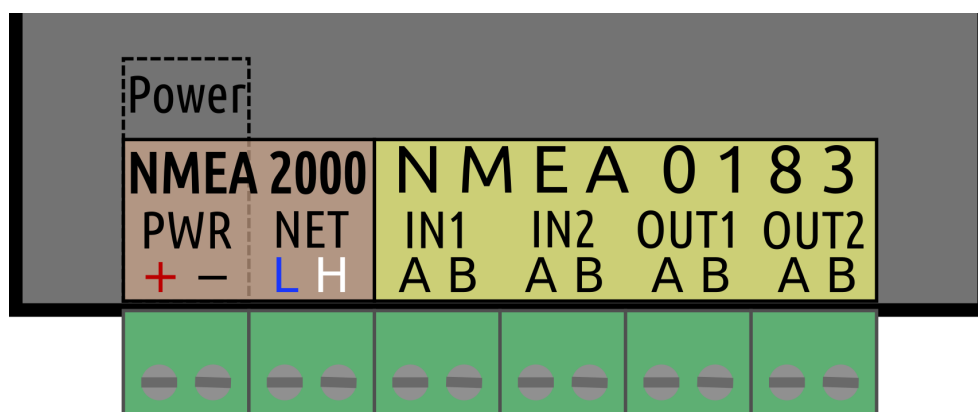
Connect a listener to an NMEA0183 output (#1 or #2). It is possible to connect two or three listeners in parallel to one output if they operate at the same baud rate. Connect A (or H or +) to A and B (or L or -) to B.

Analog Inputs “AN IN”

Support for those two inputs will come in the next firmware versions. These inputs will allow measuring DC voltages (e.g. a battery), connecting the engine ignition (sensing engine on/off and counting engine hours) or for external sensors to trigger an alarm (e.g. bilge water alarm).

1.3 Hardware Models V1.1 and V1.0

The older Pitufino models have 6 pluggable connectors for bare wire ends.



Connecting to an NMEA2000/FurunoCAN/SimNet/SeaTalkNG network

For an NMEA2000 or FurunoCAN network, you need a Micro-C T-connector and a Micro-C cable. For SimNet and SeaTalkNG, you need either a T-piece or a free port on a multi joiner and a cable. Pitufino comes with screw terminals so it needs bare wires at one end of the cable. If your drop/spur cables have connectors on both ends, you can cut off the (female) connector, strip about 2-3" (max. 8 cm) of the sheath and shield, and strip less than 0.5" (max. 1 cm) of the wire ends. It is recommended to tin the wire ends. We also recommend to wrap the shield back over the pair of data wires and fix it with heat-shrink tube to avoid unshielded sections. SeaTalkNG cables have an additional wire (yellow) that is not used. This extra wire end can be cut short and isolated.

Connect the network data wires to the NET-L and NET-H screw terminals (note, the following wire colors are valid only for original cables, compliant with the NMEA2000 standard):

blue	... NET-L (or CAN Low)	=> NET L
white (in SimNet cables yellow)	... NET-H (or CAN High)	=> NET H

It is recommended to supply Pitufino with power via the network. Check whether your network can handle an additional load: Pitufino adds a network load of 3 LEN. If yes, connect the network power supply wires to the correct screw terminals:

black	... NET-C (Common, GND, Ground)	=> PWR -
red	... NET-S (Supply, usually 12 VDC)	=> PWR +

If your network cannot power an additional device, it is possible to supply Pitufino from another power source (12 VDC or 24 VDC) as long as it has the **same ground** as the NMEA2000 network.

Connecting a power supply

If you do not have an NMEA2000 network or your network powers already too many other devices, connect the PWR - (battery minus) and PWR + (battery plus) screw terminals to your power source. It is recommended to use a breaker or fuse (3-5 A) in the positive supply wire.

Connecting NMEA0183 devices

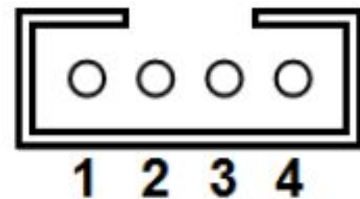
Pitufino can be connected to two NMEA0183 talkers and to two (or more) NMEA0183 listeners. Connect a talker to an NMEA0183 input (#1 or #2). Only one talker is allowed per input. Connect A (or H or +) to A and B (or L or -) to B.

Connect a listener to an NMEA0183 output (#1 or #2). It is possible to connect two or three listeners in parallel to one output if they operate at the same baud rate. Connect A (or H or +) to A and B (or L or -) to B.

Connect Victron VE.Direct devices

Instead of NMEA0183 devices, Victron battery monitors, smart shunts and MPPT solar chargers can be connected to Pitufino. You will need a 4-pin, 2mm-pitch, female PH connector (JST) to connect to a Victron VE.Direct port. The following table shows the VE.Direct pinout, pin 1 (GND) needs to be connected to NMEA0183 IN pin **B** and pin 3 (TX) to NMEA0183 IN pin **A**.

VE.Direct	Pitufino NMEA0183 IN#1 or IN#2
1 ... GND	B
2 ... RX	not connected
3 ... TX	A
4 ... PWR+	not connected



2 Configuration

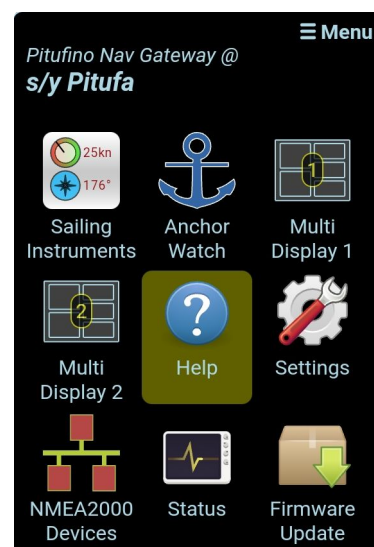
Pitufino can be configured using your **web browser**. As soon as Pitufino gets supplied with power, it provides a **Wi-Fi** access point named **PITUFINO1** (this is the factory-default name and should be changed). To connect to this access point, a password is needed: the factory-default password is **12345678**. If your computer or mobile device supports mDNS (e.g., Apple’s *Bonjour* service discovery), Pitufino’s web pages can also be found under the address `pitufino.local` (i.e., <http://pitufino.local/>). If your device does not support mDNS (e.g., older Android or older Windows), you have to enter Pitufino’s IP address **192.168.4.1** (<http://192.168.4.1/>) in your browser’s address bar.



Welcome to Pitufino! On the browser page with Pitufino’s main menu, click “Settings”.

2.1 Essential Settings

1. On Pitufino’s “Settings” page (Menu) change the **Wi-Fi password** under “Wi-Fi Settings”. We strongly recommend to also change the name (SSID) of Pitufino’s access point.
2. If your Pitufino is connected to **NMEA0183 devices**, you must set the proper **baud rates** for the two NMEA0183 ports (see documentation of your NMEA0183 devices) under “NMEA0183 In/Out #1/#2 Settings”. The standard value is 4800, for AIS devices typically 38400 is used. If **Victron devices** are connected, VE.Direct needs to be selected under “**Port Configuration**”.



2.2 Recommended Settings

1. We recommend to enable **HTTP Authentication** under “General Settings”. Choose a username and a password. This login is then necessary in your web browser for all security-critical requests (e.g., to see/change settings, reboot, restore factory defaults, remote-control your auto pilot, update firmware, ...). Note, the login credentials are requested only once per browser session and are transferred in an encrypted form. For convenience, your browser can remember your login data.
2. Enter your vessel’s name.

2.3 Filter Settings and Routing

A filter can allow or reject data from a connected navigation device. For example, often several devices transmit position data (GPS, chart plotter, AIS, dedicated NMEA2000 GPS antenna, ...) and it is a bad idea to merge data of different devices of the same kind into a single stream (as the current position would quickly jump between the different mounting places of the GPS antennas). Now, filter settings should allow GPS data only from one device, the most reliable or your preferred one.

For NMEA0183 inputs, different filters can be used for different routing destinations: a “stream filter” controls what is sent to other apps/software over TCP/UDP, a “multiplex filter” controls what is sent to the other NMEA0183 output and an “echo filter” selects which sentences are echoed back to the own output. Note, NMEA0183 outputs are disabled per factory default and need to be enabled if such routing is required.

To facilitate configuration, Pitufino’s **“Help” page** (Menu) shows the routing diagram and each filter box is a hyperlink that brings you to the corresponding section on the “Settings” page.

For an optimal configuration it is necessary to know about all connected devices, so it’s wise to have their user manuals close by. Pitufino’s device monitoring feature (see below) can also help you to learn what kind of data different devices transmit. This knowledge is needed to choose proper filter settings.

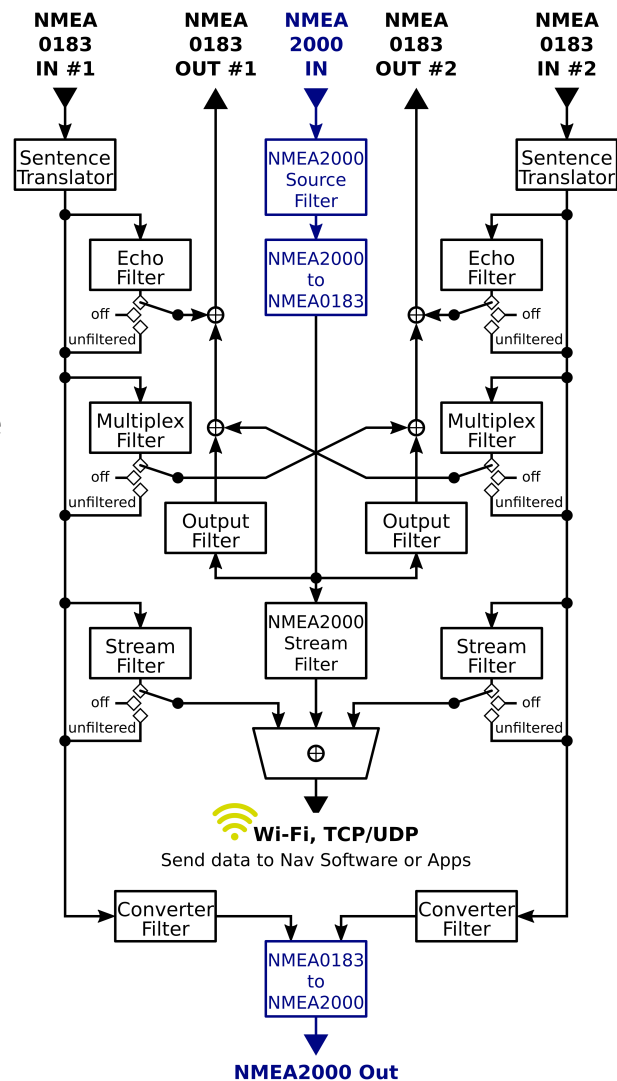
Example NMEA0183 filter

As an example, an AIS device is connected to one of Pitufino’s NMEA0183 inputs and we do not want its GPS data, but are only interested in its AIS messages. In this case an “allow only” filter for “VDM” sentences should be used. Alternatively, a “reject” filter could be used, however, the device sends GPS data using several sentences, so a longer list would be needed, e.g., “RMC, GSA, GSV, GLL, VTG, ZDA”.

If we want to use the GPS data of this AIS device as a fallback when no NMEA2000 GPS is available, we should select “Add all sentences to stream” and activate the option “Data from NMEA2000 gets priority”.

Example NMEA2000 source filter

For NMEA2000 devices, Pitufino’s device list (Menu) provides GUI options to select preferred devices for a certain type of data. The example device in the image can output all kind of data (under



Streaming via TCP/UDP

- ☐ Do not add input #1 to stream
- ☐ Add all sentences to stream
- ☒ Only add allowed sentences to stream
- ☐ Add all but rejected sentences to stream

Allowed sentences:

VDM

☐ Data from NMEA2000 gets priority

echoMAP CHIRP 54cv, US Offshore

Request Info from Device Stop Monitoring

Source Filter

Prefer this device as source for...

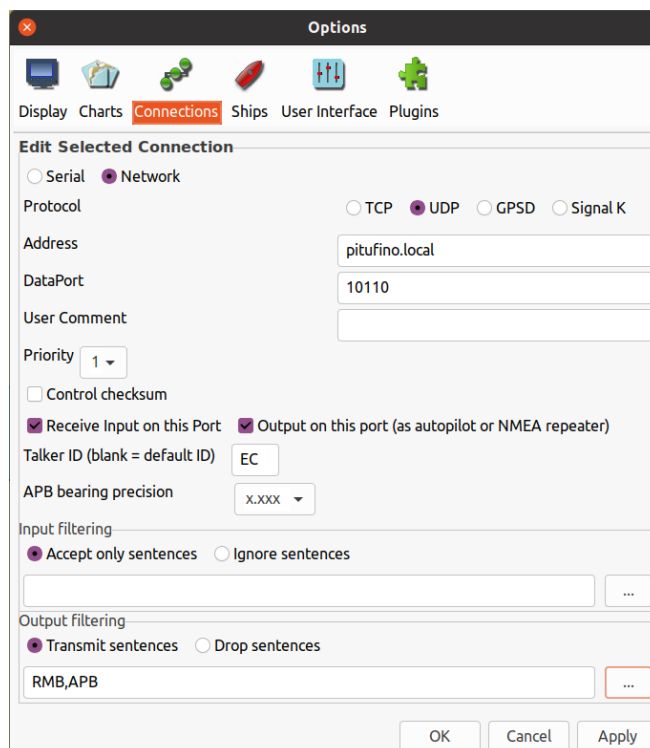
- ☐ Compass data
- ☒ Position, COG/SOG
- ☐ Boat speed
- ☐ Depth
- ☐ Wind speed/angle
- ☒ Waypoint navigation
- ☐ Magnetic variation
- ☐ Aft depth

Source address: 10

certain circumstances), but currently, only GPS and waypoint data is sent (items in green).

2.4 Server Settings and Client-Software Configuration

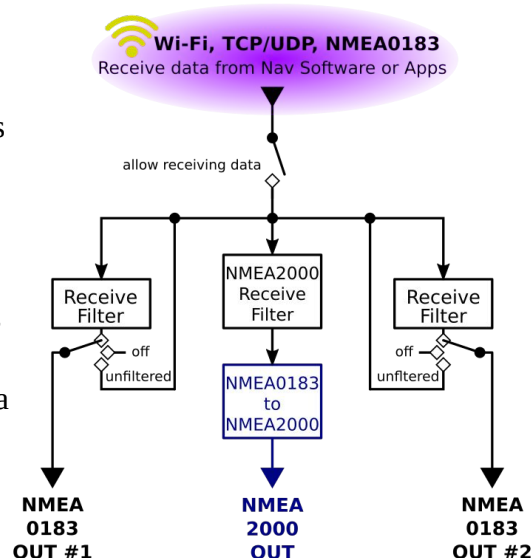
Most navigation apps and programs can read NMEA0183 streams from TCP or UDP network connections. Since firmware version 1.5.14, **TCP** is disabled per factory default and **needs to be enabled if required**. Check Pitufino's settings for TCP and UDP port numbers (factory defaults: TCP 2947 and broadcast UDP 10110). Those numbers are required when configuring apps and chart-plotter software. Some apps (e.g. Navionics Boating) are pre-configured for UDP 10110 and don't need any further server settings. Note, some firewalls block UDP broadcast messages and/or do not allow listening on most ports. If so, an exception rule needs to be added to your **firewall** to allow listening on that particular UDP port (see Appendix 1).

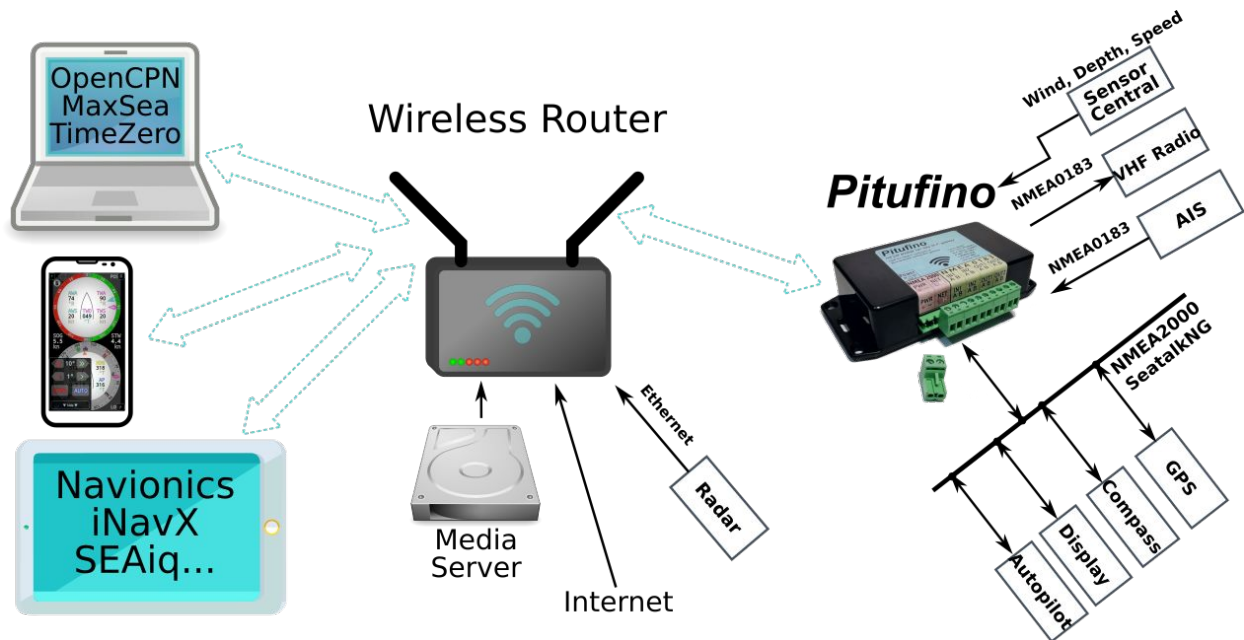


The example in the image shows the configuration of the chart-plotter software OpenCPN on a Linux or macOS device. On devices without mDNS support (older Windows or older Android versions), the IP number 192.168.4.1 must be entered in the address field. To enable a chart-plotter program to send data of the active waypoint (current waypoint of active route) back to Pitufino, make sure it outputs the RMB sentence.

Pitufino can send data from a chart-plotter program on to NMEA devices (such routing for the active waypoint data is enabled by default). In order to use the software's waypoint data on an NMEA2000 device, it may need to be configured: select Pitufino as the source for 'navigation'.

For more information on Pitufino's NMEA0183 servers, see Appendix 1. If your navigation program cannot read nav data from a network connection (e.g., SAS.Planet), a virtual serial port can be created from a network connection (see Appendix 2).





2.5 Wi-Fi Settings—Connection to an Existing Wi-Fi Network

If you have already a Wi-Fi network onboard (i.e., a wireless router), you can configure Pitufino to connect to that network instead of creating its own. This has **several advantages**: First, mobile devices do not need to switch between different networks to access different services (e.g., either Pitufino’s web apps and NMEA0183 streams or your media server and internet connection) – instead, all devices are connected to your wireless router and can access all services at the same time. Second, dedicated router devices have external antennas and so a stronger Wi-Fi signal, bringing a more robust Wi-Fi connection and a wider range. And third, the router takes over some work, reducing the workload of Pitufino.

If you choose to connect Pitufino to an **existing Wi-Fi network**, it will get a **different IP address** from your router (DHCP). In case your mobile devices do not support mDNS (i.e., they do not find Pitufino at `pitufino.local`), your apps and web browsers need this new IP address to find Pitufino. Clever routers provide a name server with the host names of all connected devices. In that case, Pitufino can be found also at the address `pitufino` (**without .local**), in a browser that is <http://pitufino/>. If this does not work, you may refer to your router’s administration page and documentation. We recommend to configure your router to give Pitufino always the same IP address. Alternatively, Pitufino can join the network using a static IP, but this address must be carefully chosen from outside the router’s DHCP range.

2.6 NMEA0183 Sentence Translator

To solve incompatibility problems between some devices, Pitufino offers several sentence translations.

- **VDO to RMC**: some AIS transponders (e.g. Furuno FA-50) do not output GPS sentences, but only VDM (other vessels’ position reports) and VDO (own vessel’s position report). Enable this translation to convert VDO into the GPS sentence RMC, which allows you to use this AIS device as a GPS source for other devices or your chart-plotter apps.

- **DBK to DPT:** some older devices (e.g. Simrad/Robertson Dataline) only output DBK (depth below keel, i.e., the depth to be displayed), but newer devices only accept DPT (transducer depth and separate display offset). Enabling this translation also requires entering your vessel's transducer-to-keel offset in centimeters.
- **VWR to MWV and MWV to VWR:** older wind instruments output VWR sentences, whereas newer ones use MWV. Enable the VWR-to-MWV translation to use older wind transducers on newer displays or the MWV-to-VWR translation to use new transducers on old displays.
- **GPS date correction:** many older GPS units and AIS transponders suffer from the 1024-week rollover. Enabling this feature gives you the correct date again.

2.7 Magnetic Variation, True Wind, Data Damping, Active Waypoint Data

Pitufino not only relays navigation data from its inputs to its outputs, but also computes its own data. The **built-in world magnetic model** (requires GPS input) provides magnetic variation which is needed whenever a heading or direction needs to be converted between magnetic and true. Pitufino's firmware available for download will always contain the latest, up-to-date model and it is very easy to update Pitufino (see section 5 *Firmware Updates*).

Pitufino properly computes **ground-referenced true wind** using COG/SOG (requires GPS input, wind sensor and compass). Additionally, wind data (true and apparent) and COG/SOG are provided to your apps and/or your displays on the NMEA2000 network with **optional damping**. This is useful if your apps or displays do not offer adequate damping. From firmware V1.5.15 on, damping for wind angle and COG (i.e., the projected course line in a chart-plotter app) is turn-compensated which makes them follow your steering without a delay. Damping for wind and COG/SOG in your apps/displays should then be disabled. If your apps/displays do offer adequate damping but you wish to use the true wind computed by Pitufino, 'Apparent and True Wind' need to be enabled in Pitufino's settings, but the filter time constant should be set to 0 seconds. Note, Pitufino's browser-run displays (see section 4) have their individual damping options.

Another feature of Pitufino is that it can take over the **computations of waypoint data** after the chart-plotter (device or software) that started a navigation to the active waypoint ('Go to' or

Built-in World Magnetic Model

- ☒ Use magn. variation from Pitufino's model (any variation data from input messages will be replaced)
- ☒ Periodically send variation on NMEA2000 network

[Change WMM Settings on Pitufino now](#)

Provide Damped Data

Filter time constant (sec):
4

Apparent and True Wind

- ☒ To NMEA0183 TCP/UDP streams
- ☐ To NMEA2000 network

COG and SOG

- ☒ To NMEA0183 TCP/UDP streams
- ☐ To NMEA2000 network

[Change Damping Settings on Pitufino now](#)

Continue Waypoint Computations

- ☒ Compute WP data (bear./dist. to WP, XTE, etc.) after chartplotter that started navigation to active WP went offline

[Change WP Settings on Pitufino now](#)

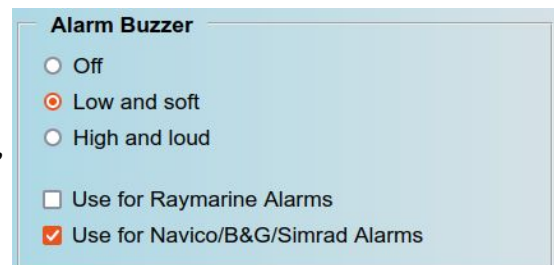
‘active route’) has been switched off. This is particularly useful on longer legs without any charted navigational obstacles where you do not really require a plotter—you can switch off your navigation laptop or your (power-hungry) plotter and still get waypoint (WP) data like bearing and distance to the active WP or cross-track error (XTE) which is needed by the autopilot when it is in NAV/TRACK mode. Pitufino stops its WP computations as soon as a connected device (or software) starts sending valid WP data again (for instance, advancing to the next WP of the active route).

Note, to use data computed by Pitufino on an NMEA2000 device, the device must be properly configured. Depending on your needs, select Pitufino as the source for variation, apparent/true wind (sometimes also ‘ground wind’ instead of true wind), GPS, and/or Navigation.

2.8 Alarms

Pitufino implements several **own alarms**: anchor drag (see 4.11 Anchor-Watch app), close AIS target, waypoint arrival, pilot waypoint confirmation, off course and general alarms like depth/wind/etc. (see 4.5 Alarm Settings). Aside from these own alarms, Pitufino can be used as a repeater (or external alarm) for **alarms transmitted over NMEA2000** from Raymarine devices, Navico/Simrad/B&G devices and engine sensors.

Pitufinos of the first generation (hardware version 1.0) do not have a buzzer but sound an alarm on your mobile devices. This requires to have a Pitufino app running continually. Starting with hardware version 1.1, Pitufino features a buzzer to sound alarms and no longer requires a continually running app. For those newer models the Settings page (Menu) has a section for the buzzer under “General Settings”.



Alarm Buzzer

- ☐ Off
- ☒ Low and soft
- ☐ High and loud
- ☐ Use for Raymarine Alarms
- ☒ Use for Navico/B&G/Simrad Alarms

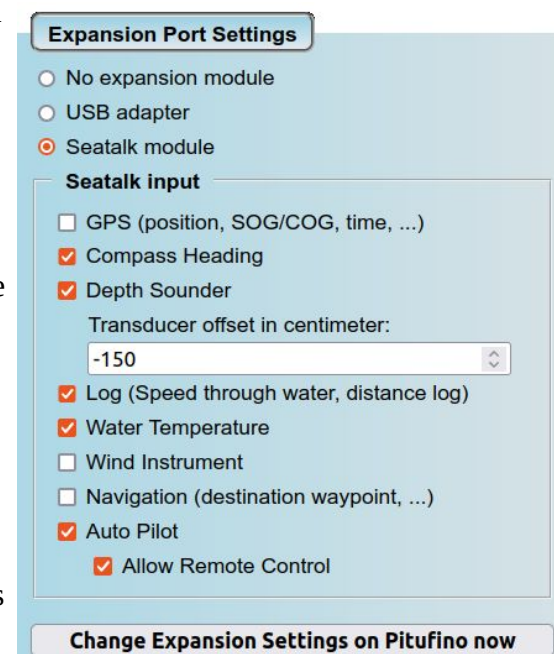
Note that on Navico/Simrad/B&G devices not all alarms are communicated over NMEA2000. For instance, a B&G Triton² display does not transmit when it triggers an ‘Anchor’ or an ‘XTE’ alarm.

2.9 Expansion Modules

Firmware V1.5.3 added support for expansion modules that can be connected to Pitufino’s circuit board. The section “Expansion Port Settings” has been added to the Settings page (Menu). Currently supported are 3 modules: SeaTalk module, USB adapter, and external alarm. These will be available in our online shop soon.

SeaTalk Module

This module allows to connect a SeaTalk1 bus of old Raymarine and Autohelm devices to Pitufino. Note, this module is not for SeaTalkNG devices—SeaTalkNG is



Expansion Port Settings

- ☐ No expansion module
- ☐ USB adapter
- ☒ Seataalk module

Seataalk input

- ☐ GPS (position, SOG/COG, time, ...)
- ☒ Compass Heading
- ☒ Depth Sounder
 - Transducer offset in centimeter:
- ☒ Log (Speed through water, distance log)
- ☒ Water Temperature
- ☐ Wind Instrument
- ☐ Navigation (destination waypoint, ...)
- ☒ Auto Pilot
 - ☒ Allow Remote Control

Change Expansion Settings on Pitufino now

supported without a module (see section). The settings include an input filter and a separate checkbox whether Pitufino is allowed to remote control the autopilot. Note, selected navigation data in the input filter is sent to TCP/UDP streams as well as converted to NMEA2000.

USB Adapter

This adapter provides a wired connection to navigation computers/laptops. For the USB connection, navigation data is routed in NMEA0183 format in the same way as for TCP/UDP streams. Chart-plotter or other navigation software needs to be configured for a serial connection with a data rate of 115200 baud.

External Alarm

This module allows connecting external buzzers, sirens or lights to indicate alarms. There are no settings required.

3 Expert Features

3.1 Status/Monitoring/Debugging Stream

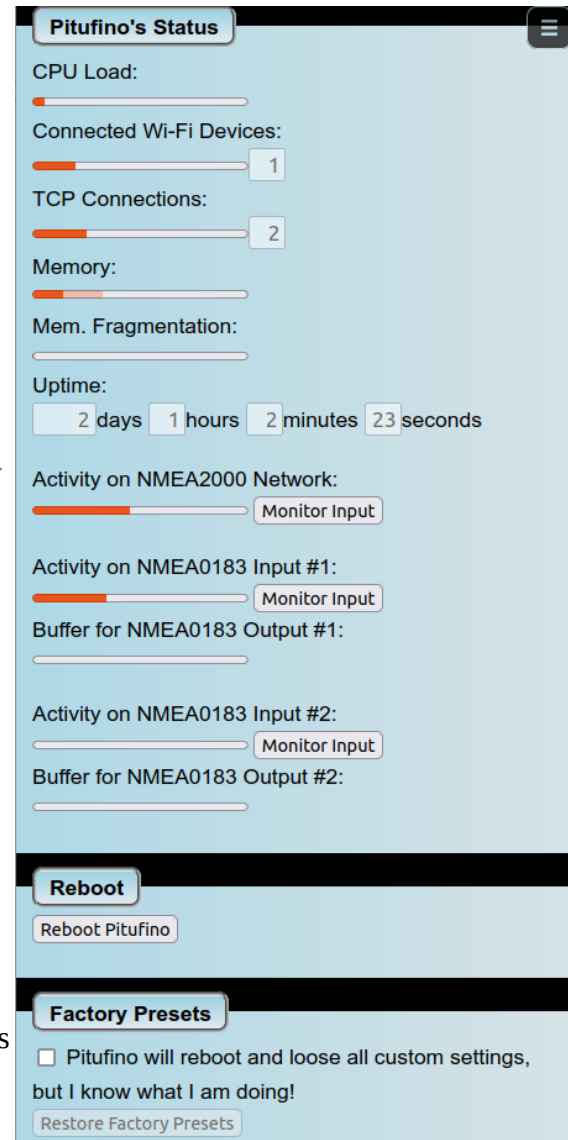
Pitufino sends occasional status information to a debugging stream on **UDP port 1122**. If required, enable this service under “Settings for NMEA Data Servers”. Under macOS and Linux it is easy to view such a stream using the netcat (nc) command in a terminal window: “nc -u pitufino.local 1122”. Press ‘Enter’ another time to start the connection. Note, only a single client connection is possible on this port.

3.2 Status Page



Pitufino’s Status page (Menu) shows system values for diagnostics.

- Number of **connected Wi-Fi devices**: Only shows a number when Pitufino’s own Wi-Fi access point is used. Number is limited to 5. The more concurrent Wi-Fi connections, the more work and memory is required, so try to keep this number low.
- Number of **TCP connections**: TCP connections require a considerable amount of processing power and memory, so try to use UDP connections in your navigation apps and chartplotter programs whenever possible. Note, that also Pitufino’s **web apps** require TCP connections. Number is limited to 8.
- **Memory**: This indicator shows Pitufino’s memory consumption. The paler shade indicates the maximally used memory since Pitufino was powered up.
- **Memory fragmentation**: This indicator should show either nothing or about 50%. If more than 50% is shown, you should reduce Pitufino’s load (e.g. reduce the number of connections).
- **Activity on NMEA2000/NMEA0183 inputs**: This may be the first place to check after installing Pitufino. All connected inputs should show activity. For NMEA0183 inputs, the baud-rate settings must be correct to see activity here.
- **Buffer usage for NMEA0183 outputs**: Ideally, these buffers should remain empty. When a buffer fills up, you are trying to send too much data to this output. Particularly low-speed (4800-baud) connections fill up quickly. Either select less data to be sent to this output or, if the connected device can be configured to use a higher data rate, use a higher baud rate.



3.3 Device Monitoring

To monitor the output of nav devices, the debugging UDP service needs to be enabled (disabled per factory default). For NMEA0183 devices, monitoring of an input can be activated on the “Status” page (Menu). NMEA messages of this input only are then sent to Pitufino’s monitoring stream on UDP port 1122.

For NMEA2000 devices, monitoring of an individual device can be activated on the “NMEA2000 Devices” page (Menu). NMEA2000 raw data is then sent on UDP port 1122.

3.4 Factory Reset

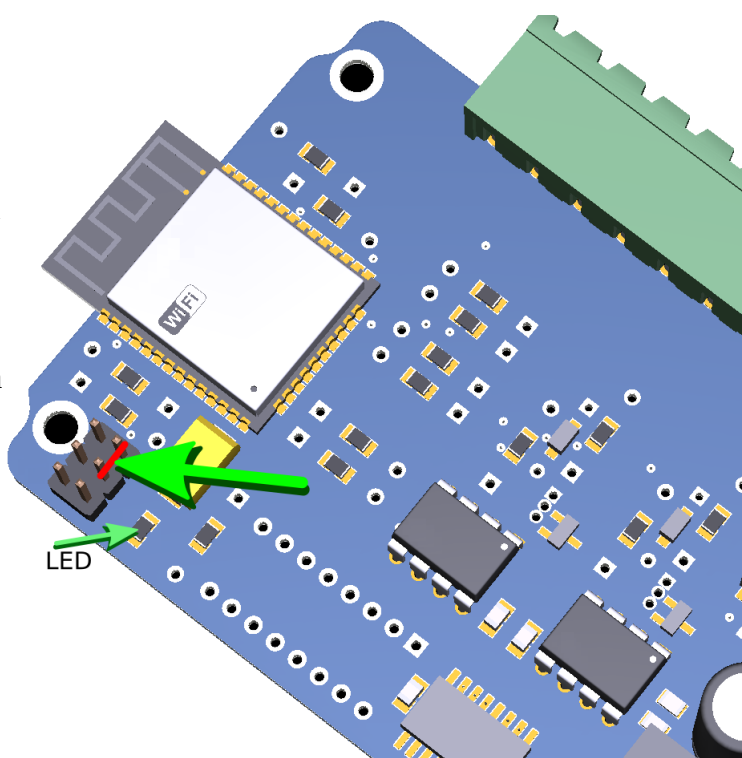
Locked out? In case you cannot remember the password of Pitufino’s Wi-Fi access point or you forgot the browser login to change Pitufino’s settings, a hardware factory reset can be performed. This restores factory defaults for Wi-Fi settings and disables HTTP authentication.

Hardware V1.2

Holding the reset button pressed for 3 seconds restores default Wi-Fi settings and disables HTTP authentication. Holding the reset button pressed for 6 seconds performs a complete factory reset (all user settings are deleted). To facilitate your timing, Pitufino’s status LED will go off after 3 seconds and on again after 6 seconds. Note, the reset button is only active after Pitufino has completed its boot process.

Hardware V1.1 and V1.0

For this reset, unplug Pitufino’s connectors and remove it from its mounting place. It is necessary to open Pitufino’s housing by unscrewing the 4 screws on the backside. Locate the 6-pin header in one corner of Pitufino’s circuit board (see illustration). You have to connect the two pins indicated by a red line in the illustration, preferably using a jumper. Once this connection is made, provide Pitufino with power. The LED will blink 3 times to indicate a successful reset. After that, unplug power and remove the connection between the 2 pins. You can reassemble the housing and mount Pitufino to its place again.



3.5 Using fixed IP addresses with Pitufino's own Wi-Fi

Mobile devices connecting to Pitufino's own access point can use fixed (manually set/static) IP addresses in the range from **192.168.4.100** to **192.168.4.110**. This actually speeds up connection time and eliminates occasional DHCP-server issues. However, it is of paramount importance to uniquely assign an address to a single device. In addition to an IP address from this range, the network settings of your mobile device require input of a **subnet** mask of 255.255.255.0 (or a prefix length of 24) and a **gateway** address of 192.168.4.1.

Once your device is connected to Pitufino's Wi-Fi with a fixed IP address, open Pitufino's Settings page in a browser and **register** your device under "Wi-Fi Settings" → "Clients with static IPs".

4 Pitufino's Browser-Run Instruments

Pitufino's local web server provides pages to view navigation data in real time in your web browser. These feature-rich **web apps** do not need to be downloaded from an app store and installed on your mobile devices—a web browser is enough! Currently, three web apps are available:

Sailing Instruments: a dedicated instrument view for sailing.

Anchor Watch: a dedicated instrument view for times at anchor.

Multi Display: a fully customizable instrument display. Two separate app instances are provided.

4.1 Browser Compatibility

Pitufino's web apps use many of the latest HTML5 features, so a browser with a recent version is required. Support for iPhones/iPads starts with iOS version 12.5 (better iOS version 15).

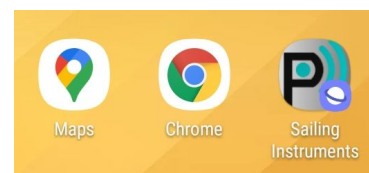
Note that some browser settings may interfere with web-app usability. For instance, a fresh install of **Samsung Internet** comes with two enabled options that **should be turned off** under *Settings > Webpage view and scrolling*: 1.) *Request desktop sites* and 2.) *Pinch to zoom in/out of webpages*.

Opera has similar options enabled by default.

For **Safari on iOS 12.5** the following two Settings should be tuned **on** under *Advanced > Experimental Features*: 1.) *Pointer Events* and 2.) *Web Authentication*.

4.2 App Launchers on your Mobile's Home Screen

We recommend to create launchers (icons) on your home screen so you can quickly open your preferred Pitufino web apps. On modern browsers such launchers will start Pitufino's pages in a **separate window without a visible browser bar/menu**.



To create a launcher, open the web app in your preferred web browser. In the browser menu search for an entry like “**Add to Home Screen**” or “Add page to ...” (and then further select “home screen”). On Android devices this works nicely with Chrome and Samsung Internet.

Newer chrome versions now no longer create proper app launchers but just a link that opens in a browser tab. The problem is that chrome now restricts installation of web apps to sites that are served via https (which Pitufino cannot do).

To avoid this limitation, enter the following address in your chrome browser

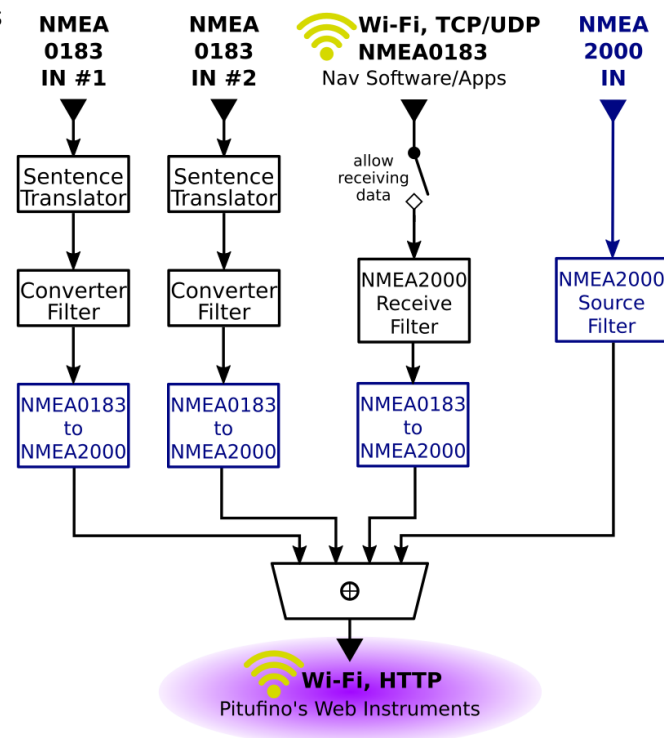
<chrome://flags/#unsafely-treat-insecure-origin-as-secure>

and enter <http://192.168.4.1> (or <http://pitufino.local> or whatever IP address your Pitufino has on your local network) in the field and enable this option. Relaunch the browser.

After relaunch, open a Pitufino web app in a tab and do an “add to home screen.” Now, also an “install” option is given that creates a proper web app launcher.

4.3 Which data-routing/filtering rules apply for these browser-run instruments?

Consider the web instruments as instruments on the NMEA2000 network. So, all settings for the NMEA2000 source filter and the NMEA0183-to-NMEA2000 converter filters affect data availability. If certain data that is already present on the NMEA2000 network is also being converted from NMEA0183, the NMEA2000 version is given higher priority.



4.4 Autopilot Control

The Sailing Instruments and the Multi Display apps include autopilot controllers, allowing you to remote control your pilot from your mobile device, making course adjustments (+1°/-1°/+10°/-10° buttons) or changing the pilot mode. In addition to switching between STANDBY, AUTO (set heading), WIND (set wind angle) or NAV/TRACK (towards active waypoint) modes, Pitufino provides its own hold-COG (no-drift) mode (set course over ground).

Pitufino's hold-COG mode

In this mode the pilot is actually left in AUTO mode and Pitufino continually adjusts the pilot heading to counteract any varying drift/leeway to keep your vessel on the desired course over ground. This mode can be used with all pilots supported by Pitufino (see below), even if one does not natively have such a no-drift mode.

The hold-COG mode is switched on by pressing the COG button on the web app's autopilot remote control. Note, do not activate this mode while the vessel is still turning, rather wait at least 5 seconds after the end of the turn to obtain a proper value for the locked course. Once this mode is engaged, Pitufino computes small course corrections about every 20 seconds, based on a COG averaged over the last 40 seconds. The locked course can be changed at any time using the +1/-1 or +10/-10 buttons of both a Pitufino web app and your pilot-controller device. The hold-COG mode is stopped by pressing any of the pilot-mode buttons of a web app (COG, AUTO, WIND, NAV, STBY) or by changing the mode on your pilot-controller device to any other than AUTO.

Which autopilots can be controlled?

The current firmware supports Raymarine's SeataalkNG/NMEA2000 pilots like Evolution EV-1/2 (note, EV-1 is included in system packs like EV-100/200/300/400) or the older SPX series (when directly connected to SeataalkNG) as well as NMEA2000 pilots from Navico/Simrad/B&G like NAC-3/NAC-2, AC42 or H5000 and from Garmin the Reactor pilot. To **enable** the remote control, your pilot must be **selected in the NMEA2000 source-filter** settings for “Autopilot data”.

Pitufinos with a SeaTalk module also support all older Raymarine/Autohelm SeaTalk pilots like the SmartPilot S series (and SPX series that is used together with a Seataalk control unit like ST6000). To enable control of a SeaTalk pilot, activate the checkbox “Allow Remote Control” in Pitufino's Settings under “Expansion Port Settings”.

4.5 Alarm Settings

All three web apps give access to Pitufino's alarm settings and allow you to silence an alarm and also to acknowledge the last ringing NMEA2000 alarm (if any).

Currently implemented alarms are for close AIS targets, waypoint arrival, autopilot waypoint confirmation, off course, NMEA2000 alarms from Raymarine and Navico/B&G/Simrad devices and from engine sensors, and general alarms (depth, wind, etc.). Each alarm can be enabled or disabled by clicking its bell symbol.

The alarm settings include four general alarm conditions, the safety distance to AIS targets, waypoint-arrival radius and maximum course deviation. The off-course alarm can be based on 1-minute or 10-minute COG averages and the reference course can be fixed to the current value of the 1 or 10-minute average or can be dynamic by using the waypoint bearing (BWP) or, if the 1-minute average is watched, by using the momentary 10-minute average.

Changes to the settings take effect only after pressing the “Apply” button!

For Pitufinos of the first generation (hardware version 1.0), make sure your browser is allowed to play media and the volume is set properly. For a reliable alarm, also make sure your browser and/or your mobile device must not enter any kind of sleep mode (don't lock your screen as this might send this browser-run app to sleep). It is also recommended to plug your mobile device to a charger to ensure it does not run out of power. Enabling an alarm automatically tries to put your device into a no-sleep mode if supported.

Pitufino hardware version 1.1 features a buzzer to sound an alarm and no longer requires the browser app to be running, the app can go to sleep or can be closed.

Select alarm condition #1
DPT < 11 m

Select alarm condition #2
DPT > 20 m

Select alarm condition #3
GWS > 35 kn

Select alarm condition #4
XTE > 0.1 NM

AIS target closer than
- 2.0 NM +

Waypoint closer than
- 1.0 NM +

Autopilot waypoint confirmation

Off course by more than
- 5° +

Watching COG averaged
1 min or 10 min

versus 10 min. Reset to
10 min BWP 000°
(dynamic) (fix current)

Raymarine alarms

Navico/B&G/Simrad alarms


Engine alarms

Apply

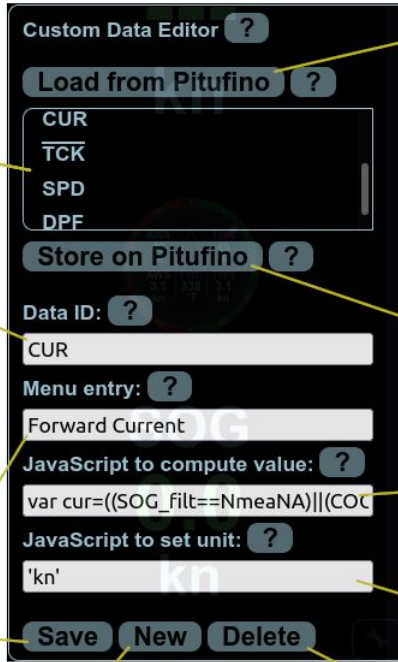
4.6 Custom-Data Editor

Firmware V1.4.5 added a **plugin mechanism** for displaying custom data in the **Sailing Instruments** web app and the **Multi Display's digital display**. Such plugins expand Pitufino's

functionality and allow an extensive customization. For instance, if you prefer to read speed in mph instead of knots or if you know a better way to calculate your time of arrival, a tiny plugin can give you the display data you want without the need of waiting for a new firmware.

The Sailing Instruments and Multi Display web apps include an editor (in the  Preferences menu) to add, change or delete plugins. Plugins contain JavaScript code, but you do not need to be a programmer to use them, simply send an email or a facebook message to the Pitufino developers if you have an idea for a new data entry or a customization wish. If you do have some programming skills, it is easy to create your own plugins. Pitufino's firmware comes with a few custom data examples: Estimated Daily Distance, Forward Current, Tack/Jibe Direction, Time To Go, Helm (needs your maximum rudder angle), STW without damping, Depth in Fathom.

After creating and saving a new plugin in the editor, it is stored in your web browser. In this way, all users onboard can have their own customization. However, it is also possible to upload all plugins from a device to Pitufino if you want to distribute them among several devices.



The screenshot shows the 'Custom Data Editor' interface. At the top, there's a 'Load from Pitufino' button. Below it is a list of installed plugins: CUR, TCK, SPD, and DPF. Further down is a 'Store on Pitufino' button. The main form contains fields for 'Data ID' (with 'CUR' entered), 'Menu entry' (with 'Forward Current' entered), 'JavaScript to compute value' (with a complex expression entered), and 'JavaScript to set unit' (with 'kn' entered). At the bottom are 'Save', 'New', and 'Delete' buttons. Annotations with yellow lines point to various parts of the interface:

- Load from Pitufino**: Load list entries from Pitufino's master file onto your local device. Pitufino is shipped with some custom-data examples. Note, existing local entries will be overwritten if their Data ID is the same as in the master file.
- List of plugins currently installed on your local device (in your web browser)**: Points to the list containing CUR, TCK, SPD, and DPF.
- Short data label like 'SOG' or 'AWA'. Must be unique (i.e. not already used by standard data entries). To be imported into the Sailing Instruments web app, this ID must not be longer than 3 characters.**: Points to the 'Data ID' field.
- Short description like 'Speed over ground'. This text will show up in the data-selector menu.**: Points to the 'Menu entry' field.
- JavaScript expression that calculates the value (number or string) to be displayed.**: Points to the 'JavaScript to compute value' field.
- JavaScript expression that sets the unit to be displayed.**: Points to the 'JavaScript to set unit' field.
- Save your changes (or your new plugin) locally.**: Points to the 'Save' button.
- Deletes the 4 input fields.**: Points to the 'New' button.
- Delete the currently selected plugin from the local list.**: Points to the 'Delete' button.

A JavaScript expression can also return the string 'dup' (which stands for don't update) to skip updating the display field (value or unit) after the current run.

4.7 Polar Data Import

In the Preferences menu of Pitufino's **Sailing Instruments and Multi Display** apps, the "Polar" button opens a window to load a polar data file from your local device. Once polar data is successfully loaded, the data is hosted on Pitufino to facilitate import into Pitufino apps also on other mobile devices ("fetch from Pitufino").

Data Format

Currently only text or csv files with TWS in columns and TWA in rows are supported. Numbers can be separated by many possible characters (eg. coma, semicolon, blank or tab), but period (full stop) is not allowed as it is used as the decimal point. The first line lists all used TWS (kn) values and the following lines start with a TWA (degree) value followed by the STW (kn) values for each TWS. So the first line must have one number less than all the other lines. A line for TWA=0 or a column for TWS=0 is not required as those values will be added automatically. It is recommended to include lines for best beating and best running angles, otherwise estimates for those angles might not be accurate. Such a line must have only one non-zero STW value for the corresponding TWS column, all other columns must be zero.

A database for polar data of sailing yachts with ORC certificates can be found at <https://jieter.github.io/orc-data/site/>

4.8 Web App Preferences

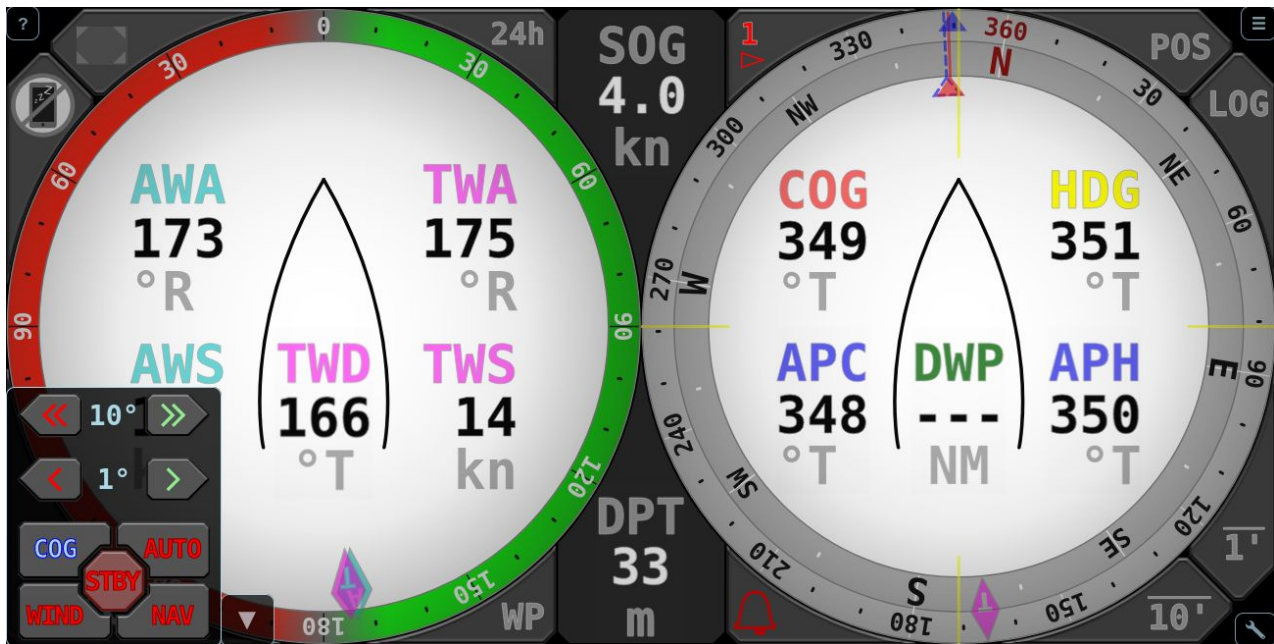
Web apps store their preferences in your web browser. So different users on different mobile devices can have their individual settings. Furthermore, browsers store the settings separate for each domain (different IP addresses or server names). So, if you first access the web apps via 192.168.4.1 and select your preferences and the next time you access the apps on the same browser for instance via pitufino.local or pitufino (behind a router), you will not see your previously selected preferences but you have to change the settings once again.

4.9 Known Issues

Users occasionally experience **crashes** of their Pitufino hardware while using the browser-run instruments. Particularly the loading of an app in a browser means a high CPU load and memory requirement for Pitufino. Pitufino's web server implements a solid caching strategy to avoid such high-load events as much as possible, but whenever a new mobile device and/or a new browser is used or a new web app version after a firmware update needs to be loaded, the entire app data needs to be transferred.

We also observe occasional timeouts when a web app is loaded on a browser for the first time, i.e., the app is **not loaded completely**. In such a situation a simple 'Reload Page' on the browser resolves the issue.

4.10 Sailing Instruments App



Pitufino's **Sailing Instruments** combine a wind instrument and a compass and display most relevant sailing data, including polar targets, active waypoint, AIS vessels and a logbook. On top of that, an autopilot-controller keypad allows you to remote control your pilot.

Which data can be displayed?

Fixed data fields inside the **wind gauge**:

- AWA ... Apparent Wind Angle
- AWS ... Apparent Wind Speed
- TWA ... True Wind Angle or
- GWA ... Ground Wind Angle
- TWS ... True Wind Speed or
- GWS ... Ground Wind Speed

The two fields on the right side can be toggled (by click/tap) between classical true wind (derived using speed through water, ignoring currents and any lateral boat movement) and ground wind (derived using speed/course over ground, including currents and leeway). The turquoise pointer in the wind gauge shows AWA, the pink one shows TWA or GWA. When a supported autopilot is in wind mode, the set wind angle of the auto pilot (APW) is displayed by a blue pointer (whether the pilot wind angle refers to apparent or true wind depends on your pilot or its settings).

Fixed fields in the **compass gauge**:

- HDG ... HeaDinG (compass)
- COG ... Course Over Ground (GPS)

Available data for the six selectable fields (the three lower fields inside the compass, the two fields between compass and wind gauge, and the lower middle field inside the wind gauge):

- SOG ... Speed Over Ground (GPS)
- STW ... Speed Through Water (log)
- DPT ... DePth
- AFT ... AFT depth (or second sounder)
- DWP ... Distance to WayPoint
- BWP ... Bearing to WayPoint
- TWD ... True Wind Direction
- GWD ... Ground Wind Direction
- VMG ... Velocity Made Good (boat speed component in wind direction)
- PBS ... Polar Boat Speed¹
- POL ... POLar performance¹

- XTE ... Cross-Track Error
- VMC ... Velocity Made on Course (closing velocity/speed to WP. Sometimes falsely called VMG.)
- TWP ... Time to WayPoint
- VAR ... magnetic VARiation
- APH AutoPilot Heading
- APC ... AutoPilot Course over ground
- APW AutoPilot Wind angle
- RUD ... RUDder angle
- SEA ... SEA temperature
- plus plugin entries (see section 4.6)

¹ ... requires imported polar data

Differently colored pointers on the compass rose indicate HDG (yellow line straight ahead), COG (red triangle), BWP (green circle), TWD/GWD (pink rhombus), APH (blue triangle) and APC (dashed blue triangle).


The two buttons **1'** and **10'** activate/deactivate **average display**. In this mode instead of the instantaneous values, 1-min or 10-min averages are shown for GWS, GWD, SOG, COG, and VMC and the averages are indicated by overlined labels (e.g., $\overline{\text{SOG}}$). Also the pointers in the compass rose for COG (red) and GWD (pink) show averages in this mode, plus a new pointer (red, dashed) indicates the estimated tack/jibe direction, i.e. the COG after a symmetrical tack/jibe (**layline**). Note, for SOG, COG and VMC, instead of averaging the instantaneous values over time, the long-term values are obtained by measuring back to your 1-min/10-min old position along a straight line. The so-obtained values for speed are generally smaller than values obtained by averaging as the real track is typically not a perfectly straight line and therefore longer.

Clicking the **LOG** button shows time and date (click to toggle between UTC and local time), **averages over the last 1min/10min/1h** for SOG, COG, GWS and GWD and the **distance log** (distance through water), total and 2x trip. The latter two can here be reset to 0.

Clicking the **POS** button shows time and date (click to toggle between UTC and local time) and the **current GPS position**.

The **WP** button appears green whenever data of an active waypoint is available. Clicking this button opens a window with **waypoint details**. If no waypoint data is received from external devices or apps, a **new waypoint can be entered** by clicking “Set New Waypoint”. The input field expects latitude followed by longitude and accepts many different coordinate formats. You can copy/paste coordinates from plotter apps like Navionics Boating here. The button “Stop Navigation” is enabled whenever Pitufino is computing the waypoint data updates.

Clicking the **24h** button opens the **logbook of the last 24 hours**. The list shows data entries like position, log, and averages of course, speed and wind taken at the last 24 full UTC hours. Maxima and minima like fastest 1-min speed were recorded since the respective previous full hour. The top-most entry shows the current values. Click the time column to toggle between UTC and local time.

The button with a red triangle  shows the number of **AIS targets**, clicking this button opens a list of up to 25 AIS targets closest to your vessel. The list is sorted according to the target distance, the closest one is at the top. The red triangle starts flashing when an AIS target enters the adjustable safety radius in the alarm settings.

The **bell** button indicates whether any **alarms** are enabled (when none are enabled, the bell is crossed out). The bell starts flashing and a siren starts yelling after an enabled alarm was triggered. Pressing the bell button opens the menu for **alarm settings** and silences the siren if it is on (and also acknowledges the last ringing NMEA2000 alarm if any).


Clicking the **AP** button opens the **autopilot remote control**. This button also indicates the current autopilot status:

- ? ... autopilot is switched off or not supported
- S ... autopilot is on Standby
- A ... autopilot is in AUTO mode (set heading)
- C ... autopilot is in hold-COG (i.e., no-drift) mode (set course over ground)
- W ... autopilot is in WIND vane mode (set wind angle)
- N ... autopilot is in NAV or TRACK mode (towards active waypoint)

The Preferences Menu

In this menu in the bottom-right corner you can choose your preferred

- **units**, for instance true or magnetic, meter or feet,
- **damping** for COG, SOG, VMC, STW and wind data between 0 sec (no damping in flat-calm conditions) and 9 sec (very strong damping for a rough sea state. Note, stronger damping inherently causes longer delays. However, COG and wind angle will still follow heading changes/vessel turn/steering without a delay. Also note, web apps have their own data damping and are not affected by Pitufino's system settings under "Provide Damped Data"),
- **color theme** for day or night,
- **alarm settings** (see section 4.5) and you can
- **import polar data** (see section 4.7) and
- **manage custom data plugins** (see section 4.6).

The color theme might also be switched by a long tap (some touch devices) or a right click (laptops/PCs) on the  button. Note, web app preferences are stored by your web browser, so different mobiles (or browsers) can have different (i.e., personal) choices.



Toggles fullscreen mode.



Toggles no-sleep mode (to prevent mobile devices from blanking their screens). This feature works on most Android devices and on older iOS devices.

Sailing Polar Data

Once polar data has been loaded, the selector for available data features two entries to **compare your current sailing performance** with the polar data:

- PBS ... Polar Boat Speed and
- POL ... Polar Performance.

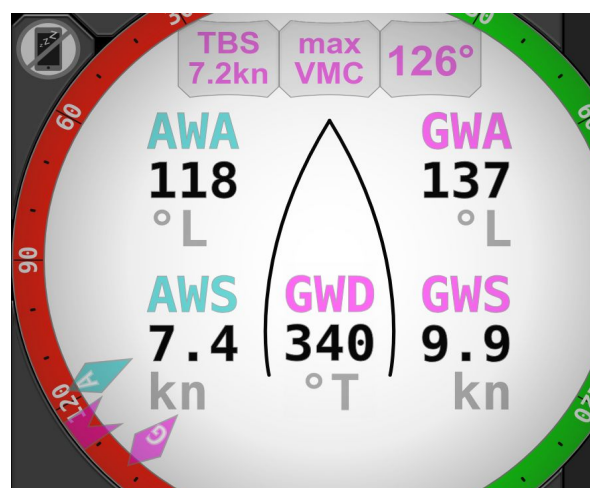
PBS is the theoretical boat speed (STW) your vessel should reach in the current wind conditions and point of sail (interpolated readout of polar data for current true wind speed and angle). Similarly, POL is your current boat speed expressed as percent of PBS.

Note, polar data is generally based on classical true wind, so performance comparisons should be made with TWS, TWA and STW. This has the advantage that comparisons are always independent of any currents. Note, when the wind gauge has been toggled to shows ground wind, polar data lookup is performed using ground wind instead of classical true wind, and POL is based on your SOG instead of STW. This option is useful when a log is not available or does not provide an accurate boat speed (e.g. a dirty paddlewheel).

The wind gauge now can show **target data**, i.e., the **optimum wind angle** and target boat speed (TBS) for sailing against or with the wind or towards the active waypoint given the current wind speed. Clicking the middle field in the target display lets you choose the target:

- up/downwind (depending on your current point of sail): target data maximizes velocity made good (VMG), i.e., the boat speed component in the direction of the wind. For going upwind this is at the optimum beating angle, for going dead downwind it is the optimum running angle (and this likely suggests you are going faster by jibing instead of going dead downwind).
- waypoint: target data maximizes velocity made on course (VMC), i.e., the boat speed component in the direction of the waypoint.

The target wind angle is also shown as a pink, notch-shaped pointer in the wind gauge as an aim for aligning the pink true-wind pointer.



Exporting your Logbook

Firmware V1.5.0 added a rudimentary **Logbook Assistant** that can be opened in a browser from the address pitufino.local/logbook (or 192.168.4.1/logbook). Note, this program is still work in progress and will come with more features in future firmware releases. Pitufino stores logbook entries of the last 24 hours internally. Additionally, the **Sailing Instruments** web app as well as the Logbook Assistant store these entries in the browser. Entries will be kept in the browser for 14 days. To obtain a continuous, gapless recording in a browser, the Sailing Instruments web app (or the Logbook Assistant) should be used regularly, at least twice a day.

The Logbook Assistant can export logbook entries stored in the browser to be used, e.g., in spreadsheet programs like MS Excel. Select the days you want to export and click “Save file” or drag-and-drop the .csv icon onto either a text editor window or a folder (file manager) and save the file with a .csv extension.

4.11 Anchor-Watch App



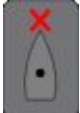
This app implements a dedicated instrument view for times at anchor. It consists of a combined wind/compass/anchor gauge and six general data displays. Note, on some screen geometries, the data displays might initially overlap the combination gauge. In such a case the data fields can be swiped away or back in view again.

Combination gauge and anchor watch

This gauge graphically displays your vessel's heading and apparent wind angle/direction and, after an anchor position has been set, also anchor bearing and anchor distance. Use the buttons in the top-right corner of the gauge to set an anchor position:



Sets your current ship's position as the anchor position.




Lets you enter a distance to set a position straight ahead of your GPS position, e.g., your bow when you set the anchor position while dropping the anchor, or your chain radius when you set the anchor position after you have anchored.



These buttons in the lower-right corner of the gauge show and change the safety radius for an anchor alarm.



To enable an audible anchor-drag alarm, this bell button in the lower-left corner needs to be activated.

Other alarms (depth etc.) can be activated in the alarm settings (via the  Preferences menu).

For Pitufinos of the first generation (hardware version 1.0), make sure your browser is allowed to play media and the volume is set properly. You can use the Test-Audio button to ensure your settings are correct. For a reliable alarm, your browser and/or your (mobile) device must not enter any kind of sleep mode. So, don't lock your screen as this might send this browser-run app to sleep (just dim the screen if appropriate). It is also recommended to plug your mobile device to a charger to ensure it does not run out of power. Enabling the audible alarm automatically tries to put your device into a no-sleep mode (if supported).

Pitufino hardware version 1.1 features a buzzer to sound an alarm and no longer requires the browser app to be running, the app can go to sleep or can be closed.





Pitufino keeps track of how many turns (i.e., rotations or 360s) your vessel does while at anchor. For instance, 2.5 means it turned clockwise two and a half times. In some anchorages (i.e., changing currents, wind against current, or catabatic winds from different directions) this info can be useful for untwisting your chain again. Pressing this button resets the counter.

Data Fields

A click/tap on one of the six data fields opens the data-selection menu and you can choose to display any of the following:

- AWA ... Apparent Wind Angle (equals true wind angle at anchor)
- AWS ... Apparent Wind Speed (equals true wind speed at anchor)
- DPT ... DePTh
- AFT ... AFT depth (or second depth sounder)
- STW ... Speed Through Water
- DAN ... Distance to ANchor
- BAN ... Bearing to ANchor
- HDG ... HeaDinG
- SEA ... SEA temperature
- TWS_{1'} ... 1min-average Wind Speed
- TWS_{10'} ... 10min-average Wind Speed
- TWS_{60'} ... 60min-average Wind Speed
- TWD_{1'} ... 1min-average Wind Direction
- TWD_{10'} ... 10min-average Wind Direction
- TWD_{60'} ... 60min-average Wind Direction

4.12 Multi Display App

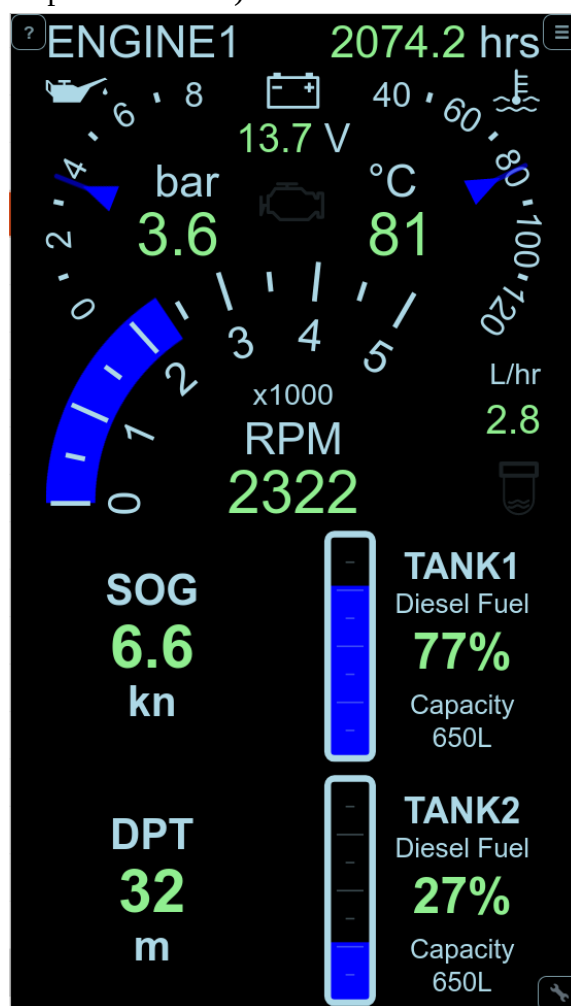


This app implements a fully customizable instrument display.

Choosing a layout

In the Preferences menu, click/tap the “Layout” button, then choose your preferred number of columns and rows. Note, the screen is always divided into two partitions and for each you can choose the columns and rows. For instance, “3 x 2 + 2 x 1” means 3 columns by 2 rows in the first screen partition and 2 columns by 1 row in the second. Also note, if you rotate your display from portrait to landscape (or the other way round), rows and columns will be swapped to maintain good space filling.

To improve screen utilization, the division into the two primary partitions can be adjusted, e.g., 50% + 50% for two equal halves, or 56% + 44% to obtain a square first partition on a 16:9 widescreen for a maximum-size first display.



Once a layout is chosen, all displays in a screen partition have the same size. This can be changed at any time by **zooming in** on one display using a pinch gesture on touch devices or a scroll input (mouse wheel, 2-finger or edge scroll on trackpad, etc.) on laptops/PCs.

Choosing display types

A swiping/dragging gesture over a display field opens the display-type selector. Alternatively, a long tap (some touch devices) or a right click (laptops/PCs) on a display field might work as well. Currently ten display types are available:

- digital display
- wind instrument
- compass
- pilot controller
- averages (for SOG, COG, GWS and GWD)
- tank display
- engine dashboard
- battery monitor
- solar charger
- UTC date/time
- position
- distance/trip log

Note, the multi display is under active development and more display types will be available in upcoming firmware versions. Check [Pitufino's web site](#) or [facebook page](#) whether a new firmware can be downloaded.

Choosing display data

For some display types, the data (or tank or engine) to be shown needs to be selected. A short click/tap on a display field opens the data/tank/engine selector.


AIS targets

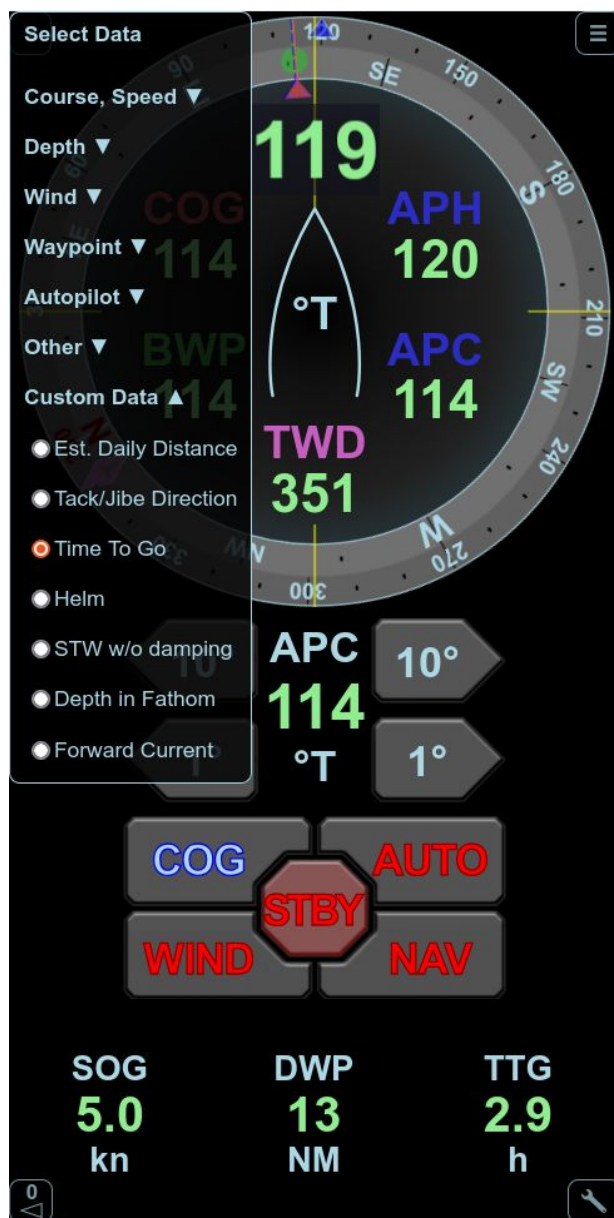
Firmware V1.5.2 added a button in the bottom-left corner to the Multi-Instrument Display that shows the number of AIS targets. Clicking this button opens a list of up to 25 AIS targets closest to your vessel. The list is sorted according to the target distance, the closest one is at the top.

Alarms

Alarm settings can be opened from the  Preferences menu.

Waypoint details

A window with details of the active waypoint can be opened either from the  Preferences menu or by clicking the “BWP” field in a compass display. If no waypoint data is received from external devices or apps, a **new waypoint can be entered** by clicking “Set New Waypoint”. The input field expects latitude followed by longitude and accepts many different coordinate formats. You can copy/paste coordinates from plotter apps like Navionics Boating here. The button “Stop Navigation” is enabled whenever Pitufino is computing the waypoint data updates.

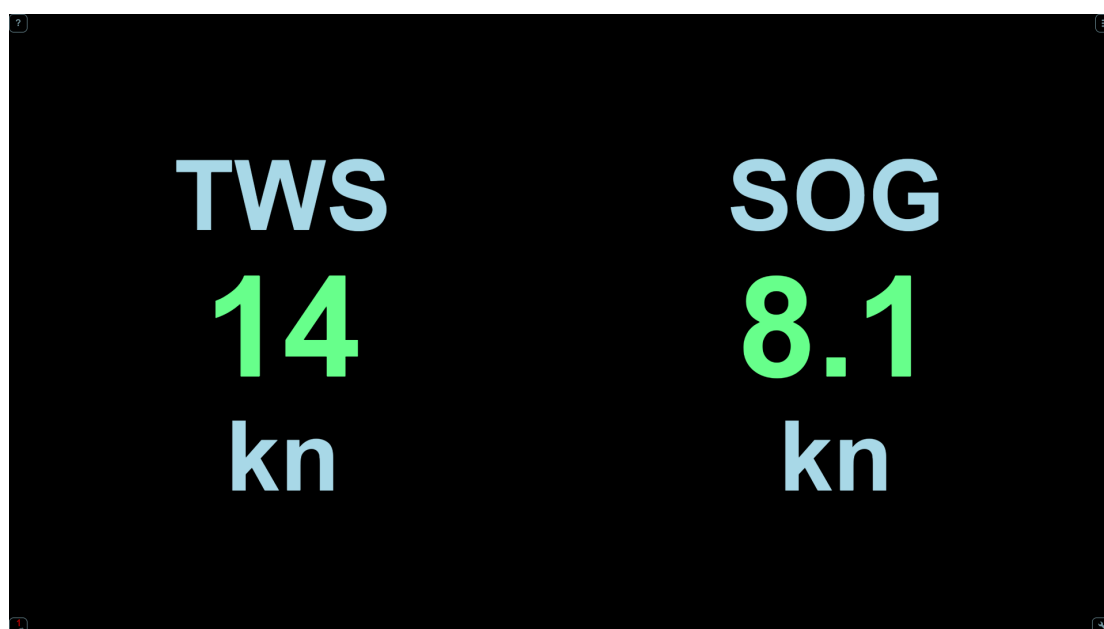


Layout example:

- 82% (for compass and keypad) + 18% (for the 3 data fields)
- 1 x 2 + 3 x 1
- compass is zoomed to use whole width

Layout example (below):

- 50% + 50%
- 1 x 1 + 1 x 1



5 Firmware Updates

Our development team regularly releases updates with new features and improvements. The latest firmware version can be downloaded from <https://www.pitufino.com/>. Announcements of new features and firmware version are also made on Pitufino's public facebook page <https://facebook.com/pitufino.gateway>. If you have a facebook account you may follow this page to receive notifications about updates.

5.1 Important Notes

- Before updating, make sure you have a stable network connection to Pitufino. We recommend to disconnect any other mobile devices from Pitufino and close other apps.
- Do not switch off your Pitufino or your computer and do not disconnect the Wi-Fi connection while the update is in progress. Pitufino automatically reboots after a successful update, which may disconnect the Wi-Fi connection. If your computer's Wi-Fi does not automatically reconnect to Pitufino, you have to reconnect manually.
- It is recommended to **verify Pitufino's settings after an update** as new features often bring new configuration options.
- Note that a new World Magnetic Model is released only every five years.

5.2 Updating from version V1.5.17 or newer



Firmware V1.5.17 added **automatic version checking and downloading** to Pitufino's Firmware Update page to simplify the update process, particularly when your computer can access Pitufino and the Internet at the same time. If you have Pitufino and the Internet on separate networks, you should first connect to Pitufino and open the Firmware Update page. Then connect to the Internet and click the "check again" button. When a new version is available, click "Download latest version" and wait until the download has finished, then connect to your Pitufino network again and click "Update".

5.3 Updating from versions older than V1.5.17

If the firmware version on your Pitufino is older than V1.5.6, you require a desktop/laptop computer (Windows/Mac/Linux) to update the firmware. If the firmware version on your Pitufino is V1.5.6 or newer, you can also use your smart phone or tablet computer to perform the update.

While connected to the internet, download the latest firmware as a .zip file from our web page <https://www.pitufino.com/>.

If the installed firmware version is older than V1.5.6, extract/unzip the contents of the zip file onto your computer. This will create a new folder called "Pitufino.Firmware.Vx.y.z" (where x.y.z will be replaced by the actual version number, e.g. "Pitufino.Firmware.V1.5.9").



Switch on your Pitufino and **connect your computer's Wi-Fi to Pitufino**. In a web browser, open one of Pitufino's pages, e.g. <http://pitufino.local> or 192.168.4.1 (or the IP address your external router has assigned to Pitufino). Choose "Firmware Update" from the page menu.

If the installed firmware version is older than V1.5.6: On the Firmware Update page, click "Browse..." to select the **folder** you created by extracting the downloaded zip file, e.g. "Pitufino.Firmware.V1.5.9". Then click "Update".

If the firmware version on your Pitufino is V1.5.6 or newer: On the Firmware Update page, click "Browse..." to select the **zip file** you downloaded, then click "Update".

6 Technical Support



The (private) **Pitufino Owners** facebook group <https://www.facebook.com/groups/pitufino.owners> is a platform to discuss all Pitufino-related topics with other Pitufino owners as well as with the developers, to ask for support, suggest feature requests or report problems. A facebook account is required to read posts and to contribute in this group.



If you do not have a facebook account, you can contact our technical team by sending an email to the address support@pitufino.com.

7 Appendix 1: Pitufino's NMEA0183 data servers

7.1 TCP Server (default port 2947)

As soon as an application (e.g., a chart-plotter program) establishes a TCP connection to the server, Pitufino sends the data stream to the application and listens for NMEA sentences received from the application. As each app has its own TCP connection, the server has to send the same data stream several times. Several applications can be served simultaneously, even several programs running on the same computer/mobile. Note, TCP connections require **considerable CPU time and memory**, so the total **number of simultaneous TCP connections (including connections to the web server) is limited to 8**. Also note, the handshaking of TCP to ensure reliable delivery (e.g., retransmitting packets) is rather hindering than useful for real-time data such as GPS messages as this can lead to network congestion and delays. For instance, when a Wi-Fi connection is weak and not all packets arrive, retransmission of an old position may delay or even jeopardize the transmission of the new position.

7.2 UDP Broadcast Server (default port 10110)

A broadcast server sends the data stream to the network without a particular destination address and without any prior requests from applications. Each computer/mobile in the network can receive this data. An application does not need to establish a connection but asks the operating system to listen on a port. Note that **firewalls** typically block such traffic by default and **exception rules** need to be specified (e.g., ALLOW INCOMING UDP 10110). Also note that commonly **only one application per computer** (or rather per operating system) is allowed to listen on a particular port. Many nav apps on mobile devices automatically listen on UDP port 10110, so no configuration is necessary.

7.3 UDP Unicast Server (default port 10111)

Similar to TCP connections, an application needs to initiate the data transfer and each app receives its own data stream. As UDP works without any handshaking, the application initiates (or resumes) the transfer by sending the first data packet (this can be empty or contain an NMEA0183 or any other message) to the server. Usually no firewall exception rules are necessary and several programs running on either the same computer/mobile or on different ones can be served. There is no strict limit on the number of simultaneous UDP streams as these require only little resources.

Weighing the pros and cons of the 3 different network connections, the UDP unicast server is the preferable choice for real-time NMEA data: no firewall problems, no limitation on the number of simultaneous streams (not in total nor per device), little CPU and memory utilization and barely any susceptibility to congestion. However, hardly any navigation apps can establish a unicast UDP connection (or not yet). To still benefit from Pitufino's UDP unicast server, **virtual serial ports** can be created from a UDP stream.

8 Appendix 2: Virtual Serial Ports from Network Connections

If your navigation program cannot read nav data from a network connection at all (e.g., SAS.Planet) or if you prefer to use Pitufino's UDP unicast server, you can create a virtual serial port—most navigation programs on Windows, Linux and macOS can read NMEA0183 data from serial (i.e. COM) ports. Under Linux and macOS, the socat program can be used (see script below), for Windows a driver software is needed.

Bash script for Linux or macOS using socat

- Creates the bidirectional, virtual serial port /tmp/vcom0 which links to Pitufino's unicast UDP server.
- Periodically sends 'HELLO' to Pitufino—only after the first 'HELLO' the connection is actually established and the data stream starts; the repeated transmissions are ignored unless the connection got interrupted, in which case the 'HELLO' resumes the stream transfer.

```
#!/bin/bash
while ((1)); do
coproc socat pty,link=/tmp/vcom0,rawer UDP:pitufino.local:10111,end-close
while test $COPROC_PID; do sleep 2; echo HELLO > /tmp/vcom0; done; done
```

Run this script before opening your nav application. The created serial port can be used for instance in OpenCPN, where such a connection is configured as 'Serial' with 'DataPort: /tmp/vcom0'. For Windows programs running on Linux via **wine** (e.g., SAS.Planet), an entry in the registry file .wine/system.reg is needed to forward the virtual serial port as e.g. COM2:

```
.wine/system.reg:
...
[Software\\Wine\\Ports]
...
"COM2"="/tmp/vcom0"
...
```

9 Appendix 3: \$PPITA Sentence for Autopilot Status

Pitufino’s firmware version V1.5.3 introduced the (proprietary) NMEA0183 sentence \$PPITA to transmit autopilot status (mode, locked heading and locked wind angle). This sentence can be used (ideally together with the standard sentences \$HDG for compass heading and \$RSA for rudder angle) to implement an autopilot display. Note, this sentence is **not** meant for controlling an autopilot.

```
$PPITA,a,x.x,a,x.x,a*hh<CR><LF>
|  |  |  |  |
|  |  |  |  |_optional event flag (introduced in V1.5.6),
|  |  |  |      currently only 1 implemented:
|  |  |  |      W (waypoint needs to be confirmed)
|  |  |  |_locked wind angle in degrees [0-360)
|  |  |_M (magnetic) or T (true)
|  |_locked heading in degrees [0-360)
|_pilot mode:
  S (STBY)
  A (AUTO)
  W (WIND)
  N (NAV)
  U (Unknown or OFF)
```

Examples (without checksum):

```
$PPITA,W,92.0,M,305.0,
```

means, the pilot is in WIND (or vane) mode with a set wind angle of 305 degrees (= 55 degrees on the port side) and it currently steers a heading of 92 degrees magnetic.

```
$PPITA,A,92.0,T,,
```

means, the pilot is in AUTO mode, holding a heading of 92 degrees true. In this mode the wind angle is not relevant and may be a null field (empty field).

See <https://github.com/ch-fb/pitufino-doc/tree/main/protocols> for more information, including the API to control autopilots from an app.

10 Document History

- 1.16 1.2/1.3: new section structure, added HW V1.2 and Victron for V1.1/1.0
 2.1: added Victron devices and Port Configuration
 2.7: modified sentences around turn-compensated damping
 3.4: renamed to 'Factory Reset', added V1.2's way of holding reset button
 4.8: added section on web app preferences
 4.11: added display types battery monitor and solar charger
 5: restructured, pre/post V1.5.17's auto checking and downloading
- 1.15 4.6: last sentence on 'dup'
- 1.14 2.7: damping got turn compensation for AWA & COG, removed sentence on sync.
 4.x: restructured web apps docu, pilot control and alarm settings are now in the general section and no longer part of Sailing Instruments. Also custom-data editor (was appendix 3) is now in this general section. New picture for alarm settings. Sailing Instruments got true/ground wind toggle, added GWD, VMG, PBS, POL, RUD as available data, ground wind in averages and log, polar import and custom data in preferences menu, new section on polars. Multi Display: GWS and GWD in averages, added 2 screenshots as layout examples
 Appendix 2: bash script got another loop around
- 1.13 2.3: routing to NMEA0183 outputs is disabled per factory default now
 2.4: TCP server is disabled per factory default now
 3.1: Debug UDP server is disabled per factory default now
 3.3: Debug UDP server needs to be enabled to monitor devices.
 3.5: added registering of devices with fixed IPs
 4.2: added app-launcher workaround for new chrome versions
 4.4: added section 'Known issues'
- 1.12 2.7: added possible naming as 'ground wind'
 4.4: added hold-COG mode and newer picture
 4.4, 4.5: added possibility to copy/paste coordinates from plotter apps
- 1.11 2.5: added possibility to join external Wi-Fi network using static IP address
 3.5: changed range for static IPs of own Wi-Fi from **192.168.4.100** to **192.168.4.110**
 4.2: added browser settings for Safari on iOS 12.5
 4.4, 4.5, 4.6: added docu for waypoint popup and extended alarm settings
 5.2: firmware update: selecting folder for fw<1.5.6 versus zip file for fw>=1.5.6
 10: added event flag in \$PPITA sentence